



(19) **United States**

(12) **Patent Application Publication**
Jeong et al.

(10) **Pub. No.: US 2008/0054798 A1**

(43) **Pub. Date: Mar. 6, 2008**

(54) **ORGANIC LIGHT EMITTING DISPLAY
DEVICE AND MOTHER SUBSTRATE OF
THE SAME**

Publication Classification

- (51) **Int. Cl.**
H01L 51/54 (2006.01)
G01R 31/00 (2006.01)
H01J 1/62 (2006.01)
- (52) **U.S. Cl.** 313/504; 324/403
- (57) **ABSTRACT**

(76) Inventors: **Jin-tae Jeong**, Suwon-si (KR);
Won-kyu Kwak, Suwon-si (KR)

Correspondence Address:
LEE & MORSE, P.C.
3141 FAIRVIEW PARK DRIVE, SUITE 500
FALLS CHURCH, VA 22042

An organic light emitting display device may include a pixel portion including a plurality of pixels, which are coupled to scan lines and data lines, a scan driver adapted to provide scan signals to the scan lines, a first transistor group adapted to test the plurality of pixels, the first transistor group being directly connected to first ends of the data lines, a second transistor group adapted to test the plurality of pixels, the second transistor group being connected to second ends of the data lines, a data distributor coupled between the second ends of the data lines and the second transistor group, a first wire group extending in a first direction at an outer area of the light emitting display device, and a second wire group extending in a second direction at the outer area of the light emitting display device.

(21) Appl. No.: **11/882,051**

(22) Filed: **Jul. 30, 2007**

(30) **Foreign Application Priority Data**

Aug. 30, 2006 (KR) 10-2006-0083148

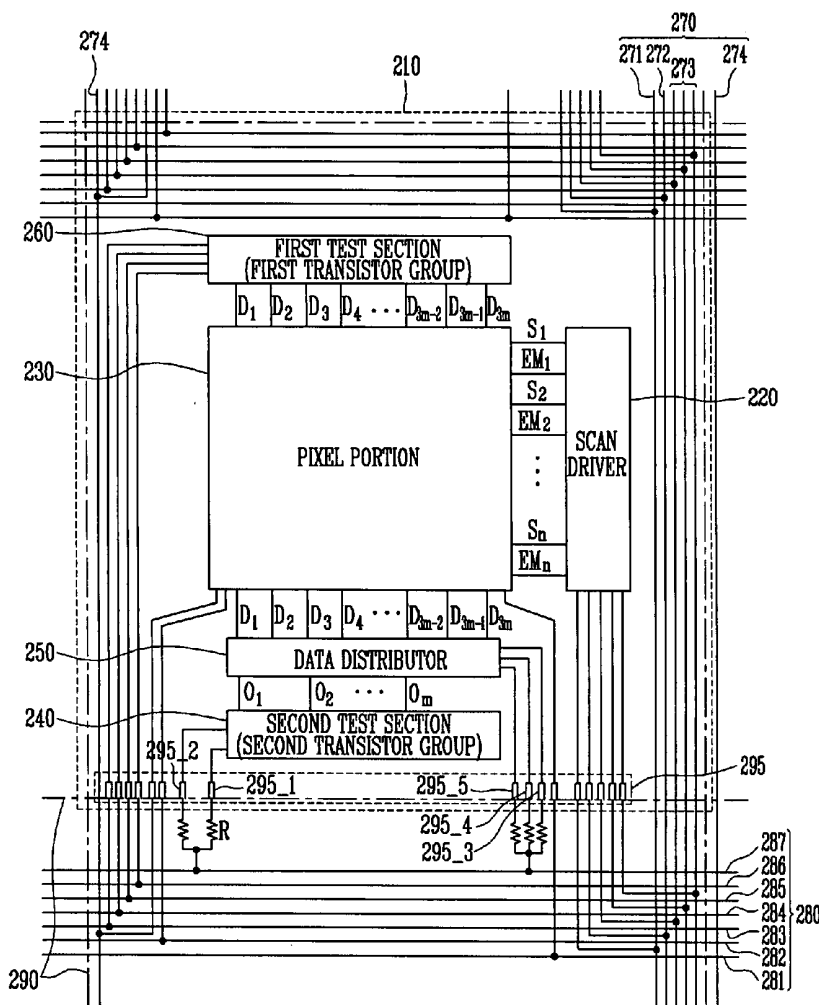


FIG. 1

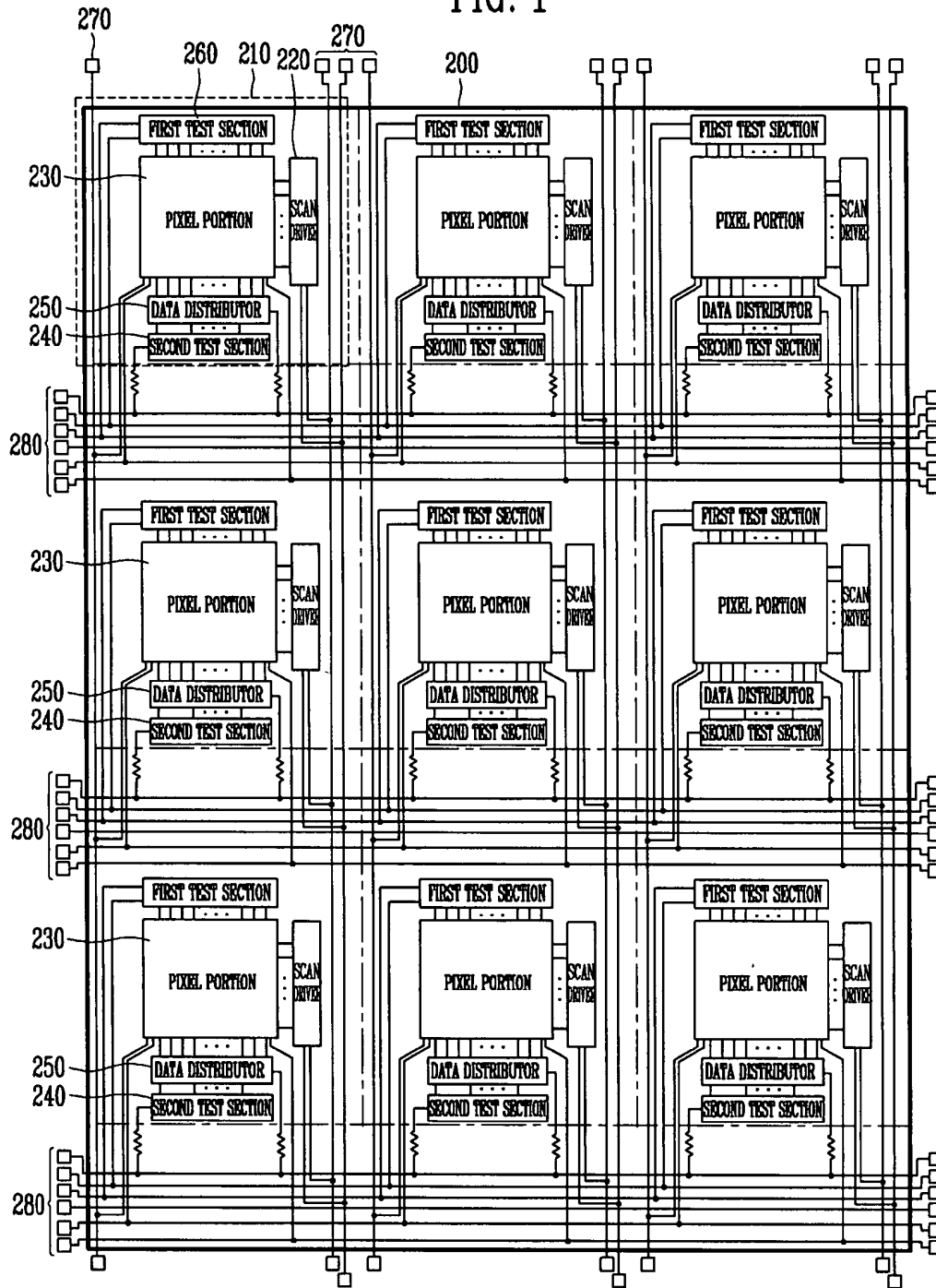


FIG. 2

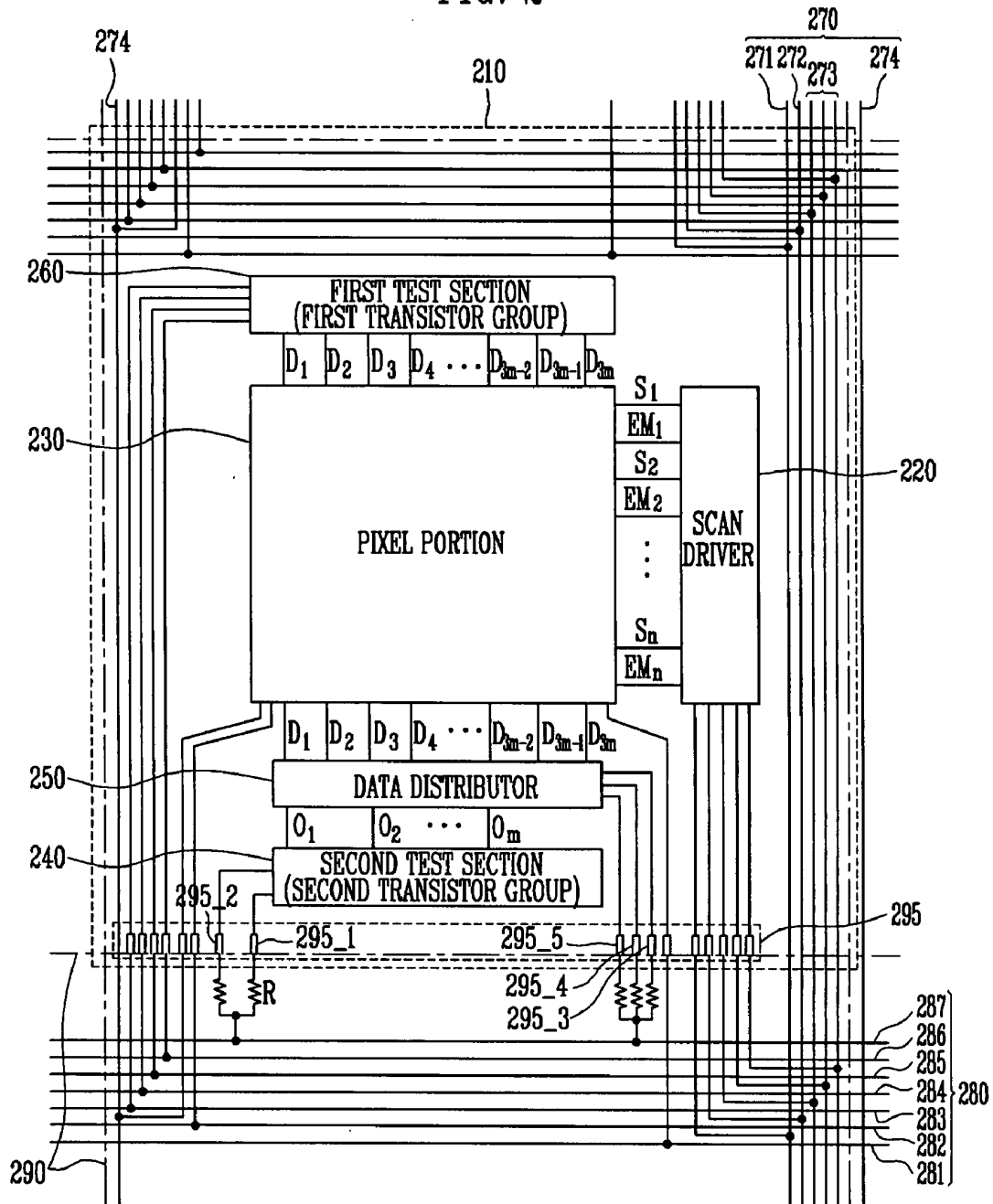


FIG. 3

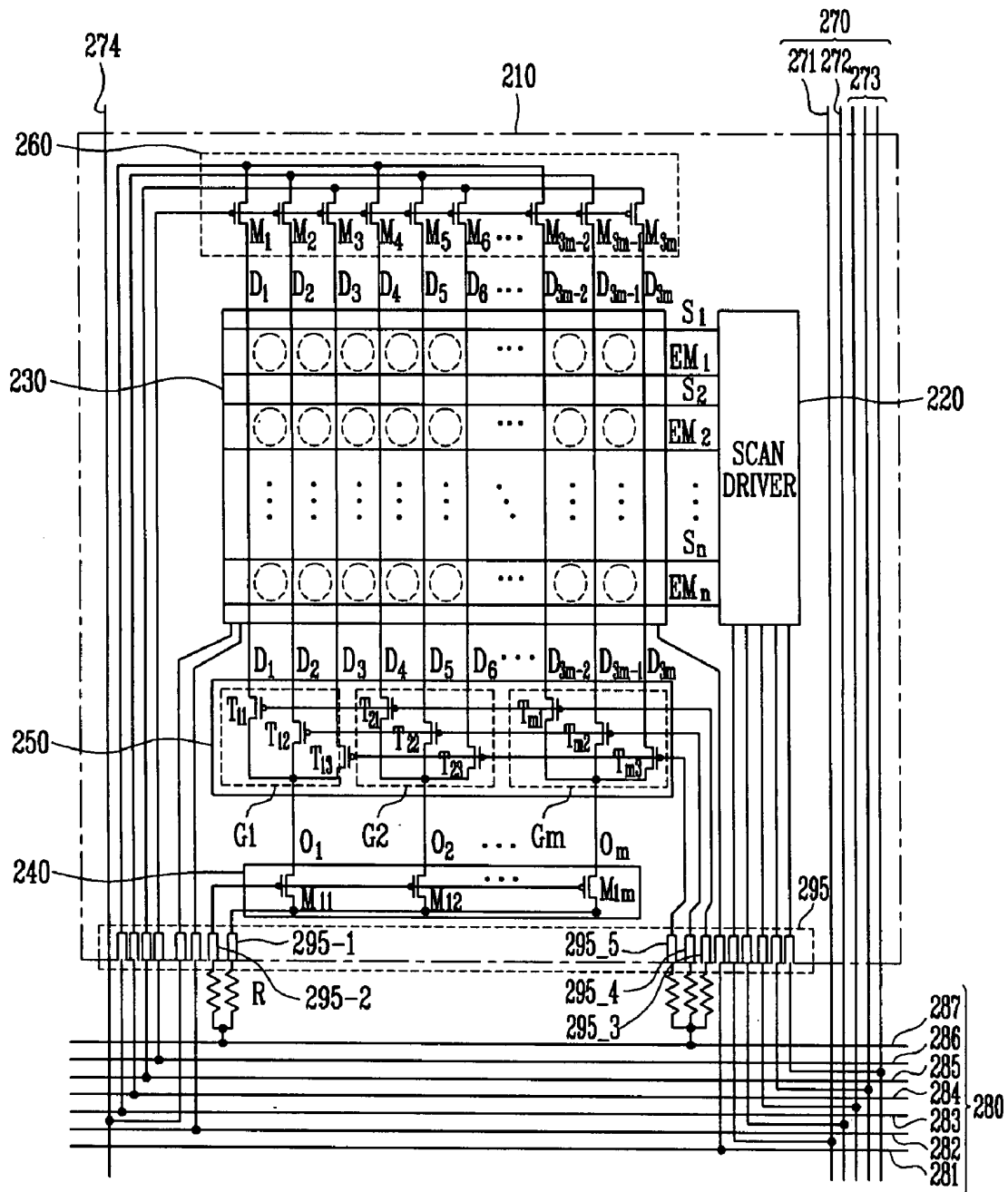


FIG. 4

Bias Resistor (ohm)	C1A			C1B			C1C			T_GATE			T_DATA		
	SHEET UNIT TEST	A/T	SHEET UNIT TEST	A/T	SHEET UNIT TEST	A/T	SHEET UNIT TEST	A/T	SHEET UNIT TEST	A/T	SHEET UNIT TEST	A/T	SHEET UNIT TEST	A/T	
	Voltage (5V)	Voltage (-7V)	Current [mA] (Spec<20mA)	Voltage (5V)	Voltage (-7V)	Current [mA] (Spec<20mA)	Voltage (5V)	Voltage (-7V)	Current [mA] (Spec<20mA)	Voltage (5V)	Voltage (-7V)	Current [mA] (Spec<20mA)	Voltage (5V)	Voltage (-7V)	Current [mA] (Spec<20mA)
100	5.00	-7.00	114.060	5.00	-7.00	114.060	5.00	-7.00	114.060	5.00	-7.00	12.000	5.00	-7.00	12.000
300	5.00	-7.00	38.020	5.00	-7.00	38.020	5.00	-7.00	38.020	5.00	-7.00	12.000	5.00	-7.00	12.000
500	5.00	-7.00	22.812	5.00	-7.00	22.812	5.00	-7.00	22.812	5.00	-7.00	12.000	5.00	-7.00	12.000
700	5.00	-7.00	16.294	5.00	-7.00	16.294	5.00	-7.00	16.294	5.00	-7.00	12.000	5.00	-7.00	12.000
900	5.00	-7.00	12.673	5.00	-7.00	12.673	5.00	-7.00	12.673	5.00	-7.00	12.000	5.00	-7.00	12.000
1100	5.00	-7.00	10.369	5.00	-7.00	10.369	5.00	-7.00	10.369	5.00	-7.00	12.000	5.00	-7.00	12.000
1300	5.00	-7.00	8.774	5.00	-7.00	8.774	5.00	-7.00	8.774	5.00	-7.00	12.000	5.00	-7.00	12.000
1500	5.00	-7.00	7.604	5.00	-7.00	7.604	5.00	-7.00	7.604	5.00	-7.00	12.000	5.00	-7.00	12.000
1700	5.00	-7.00	6.709	5.00	-7.00	6.709	5.00	-7.00	6.709	5.00	-7.00	12.000	5.00	-7.00	12.000
1900	5.00	-7.00	6.003	5.00	-7.00	6.003	5.00	-7.00	6.003	5.00	-7.00	12.000	5.00	-7.00	12.000

FIG. 5

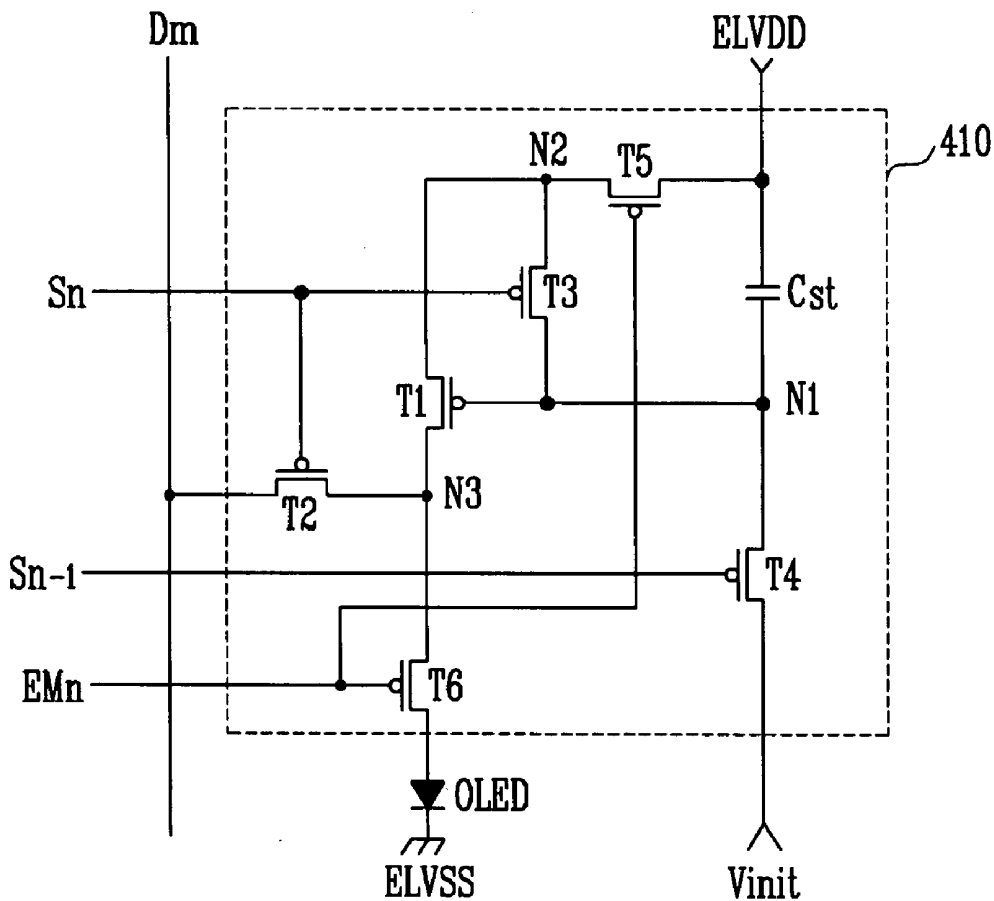
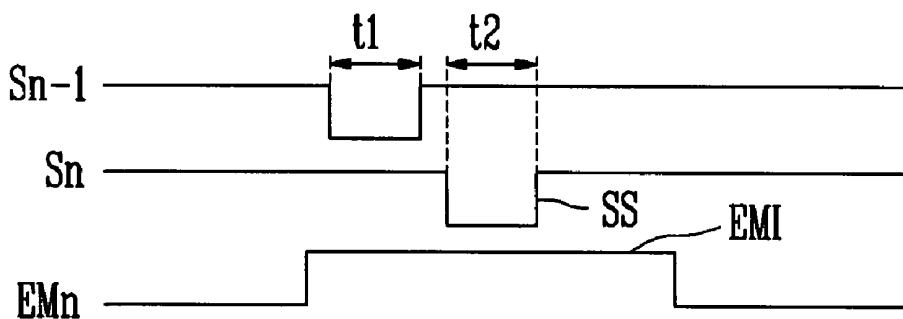


FIG. 6



**ORGANIC LIGHT EMITTING DISPLAY
DEVICE AND MOTHER SUBSTRATE OF
THE SAME**

CROSS-REFERENCE TO RELATED
APPLICATION

[0001] Cross-reference is made to concurrently filed U.S. patent application having the same title of "Organic Light Emitting Display Device and Mother Substrate of the Same" corresponding to Attorney Docket No. 304/049 and U.S. patent application Ser. No. _____.

BACKGROUND OF THE INVENTION

[0002] 1. Field of the Invention

[0003] The present invention relates to a light emitting display device and a mother substrate of the same. More particularly, the invention relates to a light emitting display device, e.g., an organic light emitting display device, and a mother substrate of the same, which may perform a sheet unit test while preventing an erroneous operation of the light emitting display device due to a signal delay with respect to a plurality of organic light emitting display devices formed on the mother substrate, and may separately perform tests on the mother substrate with respect to all structural elements used when the light emitting display device is driven.

[0004] 2. Description of the Related Art

[0005] Generally, after a plurality of light emitting display devices, e.g., organic light emitting display devices are formed on a mother substrate, they are scribed so as to be separated into individual light emitting display devices. Tests for the light emitting display devices may then be separately performed for each light emitting display device that has been scribed.

[0006] The tests for the light emitting display devices may be performed using test equipment for testing the individual light emitting display devices. If the circuit wires constituting the light emitting display devices are changed or the sizes of the light emitting display devices are changed, the test equipment or jigs for performing the test should be changed. Further, because the light emitting display devices should be separately tested, the test time and the cost may increase, thereby lowering the efficiency of the testing.

[0007] Therefore, it is desirable to perform the tests for the plurality of light emitting display devices on the mother substrate as a sheet unit before scribing the light emitting display devices. Further, when performing the tests on the mother substrate, it is desired to perform the sheet unit tests without a problem due to a signal delay. In addition, it is desirable to have a test that may be performed on the mother substrate with respect to all structural elements that may be used when the organic light emitting display devices are driven.

SUMMARY OF THE INVENTION

[0008] The present invention is therefore directed to a light emitting display and a mother substrate thereof, which substantially overcome one or more of the problems due to the limitations and disadvantages of the related art.

[0009] It is therefore a feature of an embodiment of the present invention to provide a light emitting display, e.g., an organic light emitting display, and a mother substrate thereof, which allow a sheet unit test to be performed with

respect to a plurality of and/or all of the light emitting display devices formed on the mother substrate.

[0010] It is therefore a separate feature of an embodiment of the present invention to provide a light emitting display, e.g., an organic light emitting display, and a mother substrate thereof for which a sheet unit test can be performed by directly supplying a test signal to a pixel portion.

[0011] It is therefore a separate feature of an embodiment of the present invention to provide a light emitting display, e.g., an organic light emitting display, and a mother substrate thereof for which a sheet unit test may be performed without passing a test signal through a data distributor, thereby eliminating a problem due to a drive signal delay of a data distributor when the test is performed on the mother substrate.

[0012] It is therefore a separate feature of an embodiment of the present invention to provide a light emitting display, e.g., an organic light emitting display, and a mother substrate thereof, which may be employed to separately perform tests, before scribing, with respect to all or substantially all structural elements that may be used when driving the light emitting displays after scribing.

[0013] At least one of the above and other features and advantages of the present invention may be realized by providing an organic light emitting display device, including a pixel portion including a plurality of pixels, which are coupled to scan lines and data lines, a scan driver adapted to provide scan signals to the scan lines, a first transistor group adapted to test the plurality of pixels, the first transistor group being directly connected to first ends of the data lines, a second transistor group adapted to test the plurality of pixels, the second transistor group being connected to second ends of the data lines, a data distributor coupled between the second ends of the data lines and the second transistor group, a first wire group extending in a first direction at an outer area of the light emitting display device, and a second wire group extending in a second direction at the outer area of the light emitting display device.

[0014] The data lines may be directly connected to the pixel portion such that the data lines directly connect the first transistor group to the pixel portion. The first transistor group may include a plurality of transistors, each of the plurality of transistors of the first transistor group being connected to one of the data lines, a gate electrode of the transistors being commonly connected to a pad of a pad portion, and each of the transistors maintaining an off state according to an externally supplied bias signal. The plurality of transistors of the first transistor group may include a first color transistor group, a second color transistor group and a third color transistor group that are connected to a first, second and third pad of a pad portion of the light emitting display. The organic light emitting display device may include at least two resistors including one terminal electrically coupled to a predetermined wire included in the first or second wire group and another terminal that is in an electrically open state.

[0015] The second transistor group may include a plurality of transistors, which are coupled between a pad included in a pad portion and the data distributor. Gate electrodes of the transistors of the second transistor group may be commonly coupled to a second pad included in the pad portion, and the transistors may simultaneously turn-on based on a second test control signal supplied from the second pad and supply the second test data signal to the data distributor. The

plurality of transistors of the second transistor group may include a first color transistor group, a second color transistor group and a third color transistor group that are connected to a third, fourth and fifth pad of a pad portion of the light emitting display.

[0016] The pad portion may be further away from the pixel portion than the data distributor. The first transistor group may be arranged on a first side of the pixel portion, and the second transistor group and the data distributor are arranged on a second side of the pixel portion, the first side being opposite to the second side. The plurality of transistors in the second transistor group may maintain an off state based on an externally supplied bias signal. An end of the first wire group and an end of the second wire group may be in an electrically open state.

[0017] At least one of the first wire group and the second wire group may be electrically disconnected from the pixel portion. The first wire group and the second wire group may be electrically disconnected from the pixel portion.

[0018] At least one of the above and other features and advantages of the present invention may be realized by providing a mother substrate including a plurality of organic light emitting display devices, including a first wire group extending in a first direction at outer areas of the organic light emitting display devices, and a second wire group extending in a second direction at the outer areas of the organic light emitting display devices, wherein each of the organic light emitting display devices may include a pixel portion including a plurality of pixels, which are coupled to scan lines and data lines, a scan driver adapted to provide scan signals to the scan lines, a first test section coupled to first ends of the data lines, a second test section coupled to second ends of the data lines, a data distributor coupled between the second ends of the data lines and the second test section, and at least two resistors between a predetermined wire included in the first or second wire group and the second test section, and between the predetermined wire and the data distributor.

[0019] Each of the organic light emitting display devices may further include a pad portion including a plurality of pads for receiving externally supplied power supply voltages and signals. The resistors may be disposed between the pad portion and the predetermined wire included in the first or second wire group. The second test section may include a plurality of transistors having a first terminal thereof coupled to the data distributor, a second terminal thereof coupled to a first pad of the plurality of pads, and a gate terminal commonly coupled to a second pad of the plurality of pads, wherein one of the resistors is arranged between the first pad and a predetermined wire including in the first or second wire group, and another of the resistors is arranged between the second pad and the predetermined wire group.

[0020] The resistors may be disposed outside of a scribe line of the organic light emitting display device in which the second test section and the data distributor connected to the resistor are arranged. The data distributor may include first distribution transistors coupled between one of transistors included in the second test section and data lines of a first sub-pixel of the pixel portion, second distribution transistors coupled between one of transistors included in the second test section and data lines of a second sub-pixel of the pixel portion, and third distribution transistors coupled between one of transistors included in the second test section and data lines of a third sub-pixel of the pixel portion.

[0021] One of the resistors may be disposed between a third pad to which gate electrodes of the first distribution transistors are coupled in common and a predetermined wire included in the first or second wire group, a second one of the resistors is disposed between a fourth pad to which gate electrodes of the second distribution transistors are coupled in common and the predetermined wire, and a third one of the resistors is disposed between a fifth pad to which gate electrodes of the third distribution transistors are coupled in common and the predetermined wire, respectively.

[0022] Each of the first and second test sections may include a plurality of transistors coupled to the data lines, the transistors included in the first test section may be turned on during a first period of time and the transistors included in the second test section may be turned on during a second period of time, wherein the first period of time may be different from the second period of time.

[0023] The transistors included in the first test section may be simultaneously turned-on according to a first test control signal supplied from the first or second wire group and supply a first test data signal from the first or second wire group to the data lines, and the transistors included in the second test section maintain an off state according to a bias signal supplied from the first or second wire group through the resistor.

[0024] The data distributor may include a plurality of transistors between the transistors included in the second test section and the data lines, and the transistors included in the data distributors maintain an off state according to a bias signal supplied from the first or second wire group through the resistor. The transistors included in the first test section may maintain an off state according to a predetermined control signal supplied from the first or second wire group, and the transistors included in the second test section may be simultaneously turned-on according to a second test control signal supplied from an exterior through a pad portion.

[0025] The data distributor may supply a second test data signal from the second test section to at least one of first sub pixels, second sub pixels, and third sub pixels. The first wire group may be connected to respective ones of the organic light emitting display devices, which may be commonly disposed in a same column, and the second wire group may be connected to respective ones of the organic light emitting display devices, which may be commonly disposed in a same row.

[0026] The first test section may include a plurality of transistors coupled between one of the wires included in the first or second wire group and one of the data lines. The transistors included in the first test section may be simultaneously turned-on according to a first test control signal supplied from a predetermined wire of the first or second wire group, and may supply a first test data signal to the data line.

BRIEF DESCRIPTION OF THE DRAWINGS

[0027] The above and other features and advantages of the present invention will become more apparent to those of ordinary skill in the art by describing in detail exemplary embodiments thereof with reference to the attached drawings, in which:

[0028] FIG. 1 illustrates a schematic diagram of a mother substrate on which light emitting display devices are formed according to an exemplary embodiment of the present invention;

[0029] FIGS. 2 and 3 illustrate more detailed schematic diagrams of one of the light emitting display devices and wire groups shown in FIG. 1;

[0030] FIG. 4 illustrates a chart of simulation results of red, green, and blue clock signals according to resistance values of the resistors shown in FIGS. 2 and 3;

[0031] FIG. 5 illustrates a circuit diagram of an exemplary embodiment of a pixel employable by the pixel portion shown in FIGS. 1 to 3; and

[0032] FIG. 6 illustrates a waveform diagram of signals that may be supplied to control the pixel circuit shown in FIG. 5.

DETAILED DESCRIPTION OF THE INVENTION

[0033] Korean Patent Application No. 10-2006-0083148, filed on Aug. 30, 2006, in the Korean Intellectual Property Office, and entitled: "Organic Light Emitting Display Device and Mother Substrate of the Same," is incorporated by reference herein in its entirety.

[0034] The present invention will now be described more fully hereinafter with reference to the accompanying drawings, in which exemplary embodiments of the invention are illustrated. The invention may, however, be embodied in different forms and should not be construed as limited to the embodiments set forth herein. Rather, these embodiments are provided so that this disclosure will be thorough and complete, and will fully convey the scope of the invention to those skilled in the art. Like reference numerals refer to like elements throughout the specification.

[0035] In the following description of exemplary embodiments, organic light emitting display devices may be employed as exemplary light emitting display devices. However, embodiments of the invention are not limited to organic light emitting display devices and one or more aspects of the invention may be applied to other light emitting display devices.

[0036] Hereinafter, exemplary embodiments of one or more aspects of the present invention will be described in detail with reference to FIGS. 1 to 6.

[0037] FIG. 1 illustrates a schematic diagram of a mother substrate 200 on which light emitting display devices, e.g., organic light emitting displays, are formed according to an exemplary embodiment of the present invention.

[0038] Referring to FIG. 1, in some embodiments of the invention, the mother substrate 200 may include a plurality of organic light emitting display devices 210 arranged in an array, and a first wire group 270 and a second wire group 280 formed on areas of the mother substrate 200 beyond where the organic light emitting display devices 210 are formed, e.g., at outer areas of the organic light emitting display devices 210.

[0039] Each of the organic light emitting display devices 210 may include a scan driver 220, a pixel portion 230, a first test section 260, a second test section 240, and a data distributor 250.

[0040] When a test for the organic light emitting display devices 210 formed on the mother substrate 200 is performed, the first test section 260 and the second test section 240 may supply a test signal to the pixel portion 230. In some embodiments of the invention, the first test section 260 and the second test section 240 may not be simultaneously turned-on. In such cases, e.g., the first test section 260 may be in an off-state when the second test section 240 is

turned-on, and the second test section 240 may be in an off-state when the first test section 260 is turned-on. More particularly, in some embodiments of the invention, while the first test section 260 is turned-on and may be supplying a test signal to the pixel portion 230, the second test section 240 may maintain an off state, and while the second test section 240 is turned-on and may be supplying the test signal to the pixel portion 230 through the data distributor 250, the first test section 260 may maintain an off state.

[0041] The first wire group 270 may be formed to extend along a first direction, e.g., along a vertical direction, and may be commonly connected to the organic light emitting display devices 210 located in a same column on the mother substrate 200. The second wire group 280 may be formed to extend along a second direction, e.g., along a horizontal direction, and may be commonly connected to the organic light emitting display devices 210 located in a same row on the mother substrate 200.

[0042] The first and second wire groups 270 and 280 may include a predetermined number of wires, which may supply voltages from, e.g., voltage sources, and signals for a sheet unit test to the plurality of organic light emitting display devices 210.

[0043] In the mother substrate 200 according to the exemplary embodiment of the present invention, a sheet unit test may be performed with the organic light emitting display devices 210 formed on the mother substrate, which has not been scribed.

[0044] More particularly, the tests may be performed on the organic light emitting display devices 210 connected to the first and second wire groups 270 and 280, which may be coupled to a plurality of organic light emitting display devices 210, by supplying voltages from, e.g., voltage sources, and signals for the sheet unit tests to the first and second wire groups 270 and 280.

[0045] Therefore, the testing time and/or the testing costs may be reduced, and the efficiency of the test may be increased. Further, even if the circuit wires of the organic light emitting display devices 210 are changed and/or the size of the organic light emitting display devices 210 is changed, the test may be performed without changing test equipment or jigs in cases where the circuit wires of the first and second wire groups 270 and 280, and the sizes of the mother substrate 200 are not changed.

[0046] Further, when wires receiving source voltages, e.g., voltages from voltage sources, are formed to extend in different directions, it is possible to perform a test in a predetermined one of the organic light emitting display devices 210 formed on the mother substrate 200. For example, a wire receiving a voltage of a first voltage source ELVDD may be included in the first wire group 270, and a wire receiving a voltage of a second voltage source ELVSS may be included in the second wire group 280. In some embodiments of the invention, voltage sources and signals may be selectively supplied to one, some or all of the first and second wire groups 270 and 280, and depending on the ones of the first and second wire groups 270, 280 to which the voltage sources and signals are supplied during a period of time, one, some or all of the organic light emitting display devices 210 may be tested during that time. More particularly, e.g., in some embodiments, e.g., so long as voltage sources and signals are simultaneously supplied to one of the first wire groups 270 and one of the second wire groups 280,

a test may be performed on at least one predetermined one of the organic light emitting display devices **210** formed on the mother substrate **200**.

[0047] When employing a mother substrate **200** according to one or more aspects of the present invention, a test may be simultaneously performed on one, some or all of the organic light emitting display devices **210** on the mother substrate **200**, using the first and second wire groups **270** and **280**.

[0048] Referring to FIG. 1, in some embodiments of the invention, at least one resistor may be formed between one of the wires included in the first or second wire groups **270** and **280** and the second test section **240** and/or at least one resistor may be formed between the wire including the resistor and the data distributor **250**. In other words, in some embodiments of the present invention, at least two resistors may be included along a path of at least one of the wires included in the first or second wire groups **270**, **280**, e.g., at least one resistor connected to the second test section **240** and at least one resistor connected to the data distributor **250**.

[0049] After the first test section **260** is employed to perform a sheet unit test for the plurality of organic light emitting display devices **210** on the mother substrate **200**, the resistor(s) may be employed to perform a test for the individual organic light emitting display devices **210** formed on the mother substrate, which has not yet been scribed, using the second test section **240** and the data distributor **250**.

[0050] In some embodiments of the invention, after the testing, e.g., the sheet unit test is completed, the organic light emitting display devices **210** formed on the mother substrate **200** may be scribed. A scribing line **290** (shown in FIG. 2) may be located so as to electrically separate the first and second wire groups **270** and **280** from the scan driver **220**, the pixel portion **230**, the data distributor **250**, and the test section **260**, which may be included as part of the organic light emitting display device **210**, after a scribing process. Thus, in some embodiments of the invention, electrical contact points, i.e., points where the first and/or second wire groups **270**, **280** electrically connect to portions of the organic light emitting display devices **210**, may be located outside of the scribe line **290**, i.e., on a side of the scribe line **290** that is opposite to a side of the scribe line **290** where the organic light emitting display device **210** is arranged. For example, in some embodiments of the invention, the scribe line(s) **290** may extend such that when the organic light emitting display devices **210** are scribed, portions of each of the first and second wire groups **270**, **280** may be separated from the scan driver **220**, the pixel portion **230**, the data distributor **250**, the first test section **260**, and the second test section **270** of the organic light emitting display device **210**. Thus, in some embodiments of the invention, the first and second wire groups **270**, **280** may be electrically disconnected from the organic light emitting display device **210** after the organic light emitting display device **210** is scribed.

[0051] Further, as discussed above, respective resistors may be disposed between at least one of the wires included in the first and second wire groups **270** and **280** and each of the second test section **240** and the data distributor **250**. In some embodiments of the invention, the respective resistors may be located at an outside of the scribbling line **290** of the organic light emitting display device **210**. Thus, when the respective organic light emitting display devices **210** are

scribed, one terminal of the respective resistors may be electrically disconnected, i.e., in an electrically open state, whereas another terminal of the respective resistors may remain electrically connected to the respective at least one wire included in the first or second wire groups **270**, **280**.

[0052] Accordingly, in embodiments of the invention, after the scribing has been completed, the first and second wire groups **270** and **280** may be electrically disconnected. Thus, noise, e.g., static electricity, which may be introduced to the first and second wire groups **270** and **280** from the outside, may not be supplied to the scan driver **220**, the pixel portion **230**, the first test section **260**, the second test section **240**, and the data distributor **250**.

[0053] FIGS. 2 and 3 illustrate a more detailed schematic diagram of one of the light emitting displays and wire groups shown in FIG. 1.

[0054] As discussed above and as shown in FIGS. 2 and 3, the organic light emitting display device **210** may include the scan driver **220**, the pixel portion **230**, the first test section **260**, the second test section **240**, and the data distributor **250**. Further, as shown in FIGS. 2 and 3, the organic light emitting display device **210** may include a pad portion **295**. The first and second wire groups **270** and **280** may be located on the outer side of the organic light emitting display device **210**.

[0055] Referring to FIG. 2, the first wire group **270** may include a first wire **271** to which a voltage of a third voltage source VDD may be supplied, a second wire **272** to which a voltage of a fourth voltage source VSS may be supplied, third wires **273** to which scan control signals may be supplied, and a fourth wire **274** to which the first source voltage ELVDD may be supplied.

[0056] During the sheet unit test, the first wire **271** may supply the third source voltage VDD to the scan driver **220** of each of the organic light emitting display devices **210**, which may be connected to the first wire **271**.

[0057] During the sheet unit test, the second wire **272** may supply the voltage of the fourth voltage source VSS to the scan driver **220** of each of the organic light emitting display devices **210**, which may be connected to the second wire **272**.

[0058] During the sheet unit test, the third wires **273** may receive the scan control signals and may supply the scan control signals to the scan driver **220** of each of the organic light emitting display devices **210**, which may be connected to the third wires **273**. The scan control signals may include a clock signal, an output enable signal, a start pulse, etc. of the scan driver **220**. In some embodiments of the invention, a number of the scan control signals supplied to the scan driver **220** can be variously set based on the circuit constitution of the scan driver **220**. Therefore, the number of the third wires **273** may be determined by the circuit constitution of the scan driver **220**. In the following description, for the sake of convenience, the third wires **273** will be assumed to include three wires. Embodiments of the invention are not limited to such characteristics. That is, e.g., the third wires may include less than or more than three wires.

[0059] During the sheet unit test, the fourth wire **274** may supply the first source voltage ELVDD to the pixel portion **230** of each of the organic light emitting display devices **210**, which may be connected to the fourth wire **274**.

[0060] The second wire group **280** may include a plurality of wires. For example, the second wire group **280** may include seven wires, e.g., an eleventh wire **281** to which the

voltage of the second voltage source ELVSS may be supplied, a twelfth wire **282** to which an initializing voltage V_{init} may be supplied, a thirteenth wire **283** to which a first red test data signal may be supplied, a fourteenth wire **283** to which a first green test data signal may be supplied, a fifteenth wire **285** to which a first blue test data signal may be supplied, a sixteenth wire **286** to which a first test control signal may be supplied, and a seventeenth wire **287** to which a bias voltage may be supplied.

[0061] During the sheet unit test, the eleventh wire **281** may supply the voltage of the second voltage source ELVSS to the pixel portion **230** of each of the organic light emitting display devices **210**, which may be connected to the eleventh wire **281**.

[0062] During the sheet unit test, the twelfth wire **282** may supply the initializing voltage V_{init} to the pixel portion **230** of each of the organic light emitting display devices **210**, which may be connected to the twelfth wire **282**.

[0063] During the sheet unit test, the thirteenth wire **283** may supply the first red test data signal to the first test section **260** of each of the organic light emitting display devices **210**, which may be connected to the thirteenth wire **283**.

[0064] During the sheet unit test, the fourteenth wire **284** may supply the first green test data signal to the first test section **260** of each of the organic light emitting display devices **210**, which may be connected to the fourteenth wire **284**.

[0065] During the sheet unit test, the fifteenth wire **285** may supply the first blue test data signal to the first test section **260** of each of the organic light emitting display devices **210**, which may be connected to the fifteenth wire **285**.

[0066] During the sheet unit test, the sixteenth wire **286** may supply the first test control signal to the first test section **260** of each of the organic light emitting display devices **210**, which may be connected to the sixteenth wire **286**.

[0067] During the sheet unit test, the seventeenth wire **287** may supply the bias voltage to the data distributor **250** of each of the organic light emitting display devices **210**, which may be connected to the seventeenth wire **287**.

[0068] Although in the exemplary embodiment described herein with reference to FIGS. **2** and **3**, the first wire group **270** is shown to include the first to fourth wires **271** to **274** and the second wire group **280** is shown to include the eleventh to seventeenth wires **281** to **287**, embodiments of the invention are not limited to such characteristics. That is, e.g., the first wire group **270** may include less than or more than four wires and the second wire group **280** may include less than or more than seven wires. Further, e.g., the first wire **271**, which may supply the voltage of the first voltage source ELVDD may be included in both of the first and second wire groups **270** and **280** or in one of the first and second wire groups **270** and **280**.

[0069] The scan driver **220** may receive the voltage of the third voltage source VDD, the voltage of the fourth voltage source VSS, and the scan control signals from the first wire **271**, the second wire **272**, and the third wires **273**, which may be included in the first wire group **270**, respectively. The scan driver **220** may generate scan signals and emission control signals based on the voltages of the third and fourth voltage sources VDD and VSS and the scan control signals. The scan signals and the emission control signals, which may be generated in the scan driver **220**, may be supplied to

the pixel portion **230** through the scan lines S_1 to S_n and the emission control lines EM_1 to EM_n .

[0070] In the exemplary embodiment of the present invention described above, the scan driver **220** may generate both the scan signals and the emission control signals. However, embodiments of the present invention are not limited thereto. For example, in some embodiments of the invention, the scan driver **220** may generate only the scan signals and a separate emission control driver may generate only the emission control signals.

[0071] The pixel portion **230** may include a plurality of pixels connected to the scan lines S_1 to S_n and the data lines D_1 to D_{3m} . Each of the pixels may include an organic light emitting diode OLED and a plurality of sub-pixels, e.g., a red sub-pixel (first sub-pixel), a green sub-pixel (second sub-pixel), and a blue sub-pixel (third sub-pixel).

[0072] During the sheet unit test on the mother substrate **200**, the pixel portion **230** may receive the voltage of the first voltage source ELVDD, the voltage of the second voltage source ELVSS, and the initializing voltage V_{init} from the fourth wire **274** included in the first wire group **270**, the eleventh and twelfth wires **281** and **282** included in the second wire group **280**, respectively. In addition, the pixel portion **230** may receive at least one of the first red, green, and blue test data signals from the first test section **260** during the sheet unit test. After receiving the voltage of the first voltage source ELVDD, the initializing voltage V_{init} , the voltage of the second voltage source ELVSS, and the test data signals, the pixel portion **230** may display an image corresponding to those received voltages and/or signals. After the organic light emitting display devices **210** are scribed, the pixel portion **230** may receive data signals from the data distributor **250**, and may display an image corresponding to the data signals received from the data distributor **250**.

[0073] The pixel portion **230** may display an image corresponding to second test data signals supplied from the second test section **240** through the data distributor **250** when, e.g., separate tests with respect to the organic light emitting display devices **210** are performed on the mother substrate **200** using the second test section **240** and the data distributor **250**.

[0074] After the organic light emitting displays **210** are scribed, the pixel portion **230** may display an image corresponding to data signals supplied from a data driver (not shown) through the data distributor **250**.

[0075] The first test section **260** may be arranged on an upper side of the pixel portion **230**, and may be arranged on a side of the pixel portion **230** that is opposite to a side of the pixel portion **230** where the data driver **240** and the data distributor **250** may be arranged. The first test section **260** may be connected to first end portions of the data lines D_1 to D_{3m} .

[0076] As shown in FIG. **3**, the first test section **260** may include a plurality of transistors M_1 to M_{3m} , which may be connected between one of the thirteenth to fifteenth wires **283** to **285** and one of the data lines D_1 to D_{3m} . For example, transistors $M_1, M_4, \dots, M_{3m-2}$ may be connected to the thirteenth wire **283** and may be respectively connected to data lines $D_1, D_4, \dots, D_{3m-2}$ of the red sub-pixels. Transistors $M_2, M_5, \dots, M_{3m-1}$ may be connected to the fourteenth wire **284** and may be respectively connected to data lines $D_2, D_5, \dots, D_{3m-1}$ of the green sub-pixels. Transistors M_3, M_6, \dots, M_{3m} may be connected to the

fifteenth wire **285** and may be respectively connected to data lines D_3, D_6, \dots, D_{3m} of the blue sub-pixels.

[0077] Gate electrodes of the transistors M_1 to M_{3m} , which may be included in the first test section **260**, may be commonly connected to the sixteenth wire **286**.

[0078] While a sheet unit test is performed with the plurality of organic light emitting display devices **210** on the mother substrate **200**, the first test section **260** may receive the first red test data signal, the first green test data signal, the first blue test data signal, and a first test control signal from the thirteenth to sixteenth wires **283** to **286**, which may be included in the second wire group **280**. The first test data signal (the first red test data signal, the first green test data signal, and the first blue test data signal may be commonly referred to as 'first test data signal') may be a signal for determining whether the organic light emitting display device **210** is inferior, i.e., defective, or not, may be set to have various characteristics. For example, the first test data signal may be set as a lighting test data signal.

[0079] When the first red test data signal, the first green test data signal, and/or the first blue test data signal, and the first test control signal are supplied, transistors included in the first test section **260** may be simultaneously turned-on according to the first test control signal to supply the first red test data signal, the first green test data signal, and/or the first blue test data signal to the data lines D_1 to D_{3m} .

[0080] The following is a detailed description of an exemplary testing procedure using the first test section **260**. First, the first test control signal from the sixteenth wire **286** may be supplied to the transistors M_1 to M_{3m} included in the first test section **260**, and more particularly, to the gates of the transistors M_1 to M_{3m} . Thus, the transistors M_1 to M_{3m} may be simultaneously or substantially simultaneously turned-on. Accordingly, the first test data signals from the thirteenth to fifteenth wires **283** to **285** may be supplied to respective data lines D_1 to D_{m3} . The voltage of the third voltage source VDD from the first wire **271**, the voltage of the fourth voltage source VSS from the second wire **272**, and the scan control signals from the third wires **273** may be supplied to the scan driver **220**. When the scan driver **220** receives the voltage of the third voltage source VDD, the voltage of the fourth voltage source VSS, and the scan control signals, it may sequentially generate and provide scan signals and emission control signals to the pixel portion **230**. Accordingly, the pixels may emit light to display an image, thereby undergoing a lighting test.

[0081] In some embodiments of the invention, the first test section **260** may maintain an off state when a sheet unit test using the first and second wire groups **270** and **280** is not being performed. For example, while a separate test using the second test section **240** and the data distributor **250** is being performed for the respective organic light emitting display devices **210**, the transistors M_1 to M_{3m} included in the first test section **260** may maintain an off state corresponding to a predetermined control signal supplied from the thirteenth to sixteenth wires **283** to **286**. That is, in some embodiments of the invention, the transistors M_1 to M_{3m} included in the first test section **260** may maintain an off state while the second test section **240** is turned-on.

[0082] Furthermore, after the organic light emitting display devices **210** are scribed from the mother substrate **200**, the first test section **260** may maintain an off state corresponding to a bias signal supplied from the pad portion **295**. More particularly, after scribing, the first test section **260**

may remain attached to the pixel portion **230** of the respective organic light emitting display device **210**. However, the transistors of the first test section **260** may not be used to drive the organic light emitting display device **210**.

[0083] The second test section **240** may be arranged on a lower side of the pixel portion **230** and may be arranged on a side of the pixel portion **230** that is opposite to the side of the pixel portion **230** where the first test section **260** is arranged. The second test section **240** may be connected to second end portions of the data lines D_1 to D_{3m} through the data distributor **250**.

[0084] As shown in FIG. 3, the second test section **240** may include transistors M_{11} to M_{1m} , which may be connected between a first pad **295_1** included in the pad portion **295** and the data distributor **250**. Gate electrodes of the transistors M_{11} to M_{1m} may be commonly connected to the second pad **295_2** of the pad portion **295**.

[0085] While a separate test is performed on the organic light emitting display devices **210** on the mother substrate **200**, the second test section **240** may receive a second test data signal and a second test control signal from an external source through the first and second pads **295_1** and **295_2**. The second test data signal may be a signal for determining whether the organic light emitting display device **210** is or is not inferior, i.e., defective, and may be set according to various characteristics. For example, the second test data signal may be set as a lighting test data signal.

[0086] When the second test control signal and the second test data signals are supplied, the transistors M_{11} to M_{1m} may be simultaneously and/or substantially simultaneously turned-on corresponding to the second test control signal, and may provide second test data signals to the data distributor **250**.

[0087] While a separate test is being performed on the organic light emitting display devices **210** formed on the mother substrate **200**, the data distributor **250** may supply the second test data signals from respective output lines O_1 to O_m of the second test section **240** to three respective ones of the data lines D_1 to D_m associated with each of the pixels, i.e., the respective data lines associated with the red, green, and blue sub-pixels of each pixel.

[0088] In embodiments of the invention, the data distributor **250** may include a plurality of group transistors $G1$ to Gm , which may be connected between the second end portions of the data lines D_1 to D_m and the second test section **240**.

[0089] Each of the group transistors $G1$ to Gm may include first distribution transistors $T_{11}, T_{21}, \dots, T_{m1}$, second distribution transistors $T_{12}, T_{22}, \dots, T_{m2}$ and third distribution transistors $T_{13}, T_{23}, \dots, T_{m3}$. The first distribution transistors $T_{11}, T_{21}, \dots, T_{m1}$ may be coupled between one of the transistors M_{11} to M_{1m} included in the second test section **240** and the data lines $D_1, D_4, \dots, D_{3m-2}$ of the red sub-pixels. The second distribution transistors $T_{12}, T_{22}, \dots, T_{m2}$ may be coupled between one of the transistors M_{11} to M_{1m} included in the second test section **240** and the data lines $D_2, D_5, \dots, D_{3m-1}$ of the green sub-pixels. The third distribution transistors $T_{13}, T_{23}, \dots, T_{m3}$ may be coupled between one of the transistors M_{11} to M_{1m} included in the second test section **240** and the data lines D_3, D_6, \dots, D_{3m} of the blue sub-pixels.

[0090] Gate electrodes of the first distribution transistors $T_{11}, T_{21}, \dots, T_{m1}$ may be commonly connected to a third pad **295_3** of the pad portion **295**. Gate electrodes of the

second distribution transistors $T_{12}, T_{22}, \dots, T_{m2}$ may be commonly connected to a fourth pad **295_4** of the pad portion **295**. Gate electrodes of the third distribution transistors $T_{13}, T_{23}, \dots, T_{m3}$ may be commonly connected to a fifth pad **295_5** of the pad portion **295**.

[0091] While a separate test may be performed with the organic light emitting display devices **210** formed on the mother substrate **200**, the distribution transistors T_{11} to T_{m3} may receive a red clock signal, a green clock signal, and a blue clock signal from the third, fourth, and fifth pads **295_3**, **295_4**, and **295_5**, and may provide a second test data signal from the output lines O_1 to O_m of the second test section **240** based on the received red, green and/or blue clock signals. The distribution transistors T_{11} to T_{m3} may control the red clock signal, the green clock signal, and the blue clock signal to display a color image. For example, the distribution transistors T_{11} to T_{m3} may control the red clock signal, the green clock signal, and the blue clock signal at different times to display red, green, and blue images. Further, the distribution transistors T_{11} to T_{m3} may simultaneously provide the red clock signal, the green clock signal, and the blue clock signal to display a white image.

[0092] In some embodiments of the invention, the data distributor **250** may not be used in a sheet unit test using the first test section **260**. In some embodiments of the invention, when only the separate test is being performed on the organic light emitting display devices **210** formed on the mother substrate **200**, the data distributor **250** may provide second test data signals from the second test section **240** to the pixel portion **230** corresponding to control signal from the pad portion **295**.

[0093] The following is a detailed description of an exemplary separate test that may be respectively performed on the organic light emitting display devices **210** using the second test section **240** and the data distributor **250**. First, an array test equipment may supply the second test data signals, the second test control signal, the red clock signal, the green clock signal, and/or the blue clock signal to first, second, third, fourth, and/or fifth pads **295_1**, **295_2**, **295_3**, **295_4**, **295_5**.

[0094] Accordingly, the transistors M_{11} to M_{1m} included in the second test section **240** may be turned-on according to the second test control signal and may output the second test data signals from the first pad **295_1** to the output lines O_1 to O_m .

[0095] The distribution transistors T_{11} to T_{m3} having received the red, green, and/or blue clock signals, may provide second test signals from the output lines O_1 to O_m of the second test section **240** to data lines D of red, green, and/or blue sub-pixels according to the received red, green and/or blue clock signals.

[0096] Moreover, the scan driver **220** may receive the voltage of the third voltage source VDD , the voltage of the fourth voltage source VSS and/or the scan control signals via the pad portion **295** from, e.g., an external source(s). More particularly, e.g., the scan driver **220** may receive the voltage of the third voltage source VDD from the first wire **271**, the voltage of the fourth voltage source VSS from the second wire **272**, and scan control signals from the third wires **273**. When the scan driver **220** receives the voltage of the third source voltage VDD , the voltage of the fourth source voltage VSS , and the scan control signals, the scan driver **220** may sequentially generate and provide scan signals and emission control signals to the pixel portion **230**.

[0097] When pixels receive the scan signal, the emission control signal, and the second test data signal, they may emit light to display an image, thereby undergoing a test being performed. In some embodiments of the invention, e.g., when a lighting test data signal is supplied as the second test data signal, an array test and/or the lighting test may be performed.

[0098] At this time, the voltage of the first voltage source $ELVDD$, the voltage of the second voltage source $ELVSS$, and/or the initializing voltage V_{init} may be supplied to the pixel portion **230**. More particularly, the voltage of the first voltage source $ELVDD$, the voltage of the second voltage source $ELVSS$ and the initializing voltage V_{init} may be received via the pad portion **295** from, e.g., an external source or through the fourth wire **274**, the eleventh wire **281**, and the twelfth wire **282**.

[0099] In embodiments of the invention, while a sheet unit test is performed using the first test section **260** and the first and second wire groups **270** and **280**, the second test section **240** and the data distributor **250** may maintain an off state. More particularly, because transistors M_{11} to M_{1m} included in the second test section **240** and distribution transistors T_{11} to T_{m3} included in the data distributor **250** may be coupled to the seventeenth wire **287** through the pad portion **295**, they maintain an off state based on the bias signal V_{bias} supplied from the seventeenth wire **287** through a resistor R . Thus, by maintaining the transistors M_{11} to M_{1m} and the distribution transistors T_{11} to T_{m3} in an off state based on the bias signal V_{bias} , the first test data signal supplied to the data lines D_1 to D_{3m} may not be transferred to the data distributor **250**.

[0100] After the organic light emitting display devices **210** are scribed from the mother substrate **200**, the transistors M_{11} to M_{1m} may maintain an off state according to the externally supplied bias signal V_{bias} , which may be supplied through the pad portion **295**. The second test section **240** may not be used to drive the organic light emitting display device **210** but remain. Further, the data distributor **250** may provide data signals from a data driver (not shown) corresponding to red, green, and blue clock signals supplied from the pad portion **295**.

[0101] The pad portion **295** may include a plurality of pads for receiving signals and/or voltages, e.g., power source voltages, external signals. The pad portion **295** may be positioned at an edge area adjacent to a scribing line of the organic light emitting display device **210**. More particularly, e.g., the pad portion **295** may be positioned so as to remain with the respective organic light emitting device **210** after scribing. However, embodiments of the present invention are not limited thereto.

[0102] As described above, in some embodiments of the invention, a sheet unit test may be performed on a plurality of organic light emitting display devices **210** formed on the mother substrate **200** using the first and second wire groups **270** and **280**. In such cases, the present invention may supply a test data signal to data lines D_1 to D_{3m} using the first test section **260** while the second test section **240** and the data distributor **250** may be in an off state, thereby performing a sheet unit test without problems due to a signal delay.

[0103] More particularly, when voltages of power supplies and signals are supplied to a plurality of organic light emitting display devices **210** through the first and second wire groups **270** and **280** in order to perform the sheet unit test, a signal delay and the like can occur. Because the

signals supplied through the first and second wire groups **270** and **280** may be externally provided, organic light emitting display devices **210** positioned at a center of the mother substrate **200** may receive a delayed signal and can be erroneously operated.

[0104] In particular, when a delay occurs in the red clock signal, the green clock signal, and/or the blue clock signal inputted to the data distributor **250**, problems may occur in driving the organic light emitting display device **210**. For example, when the red clock signal, the green clock signal, and/or the blue clock signal are delayed and are not supplied within the desired time, a pixel circuit cannot secure a sufficient time to charge a data voltage and thus, an exact image may not be displayed. Moreover, it is difficult to synchronize the test control signal and test data signals with the red clock signal, the green clock signal, and the blue clock signal.

[0105] Accordingly, in some embodiments of the present invention, the data distributor **250** may be set to an off state during a sheet unit test and the first test section **260** may be separately provided, so that the test data signals may be directly supplied to the pixel portion **230** from the first and/or second wire groups **270** and **280** through the first test section **260**, without passing through the data distributor **250**. In some embodiments of the invention, gate electrodes of the transistors M_1 to M_{3m} included in the first test section **260** may be commonly connected to the sixteenth wire **286** and may be simultaneously turned-on based on the first test control signal. In this state, because the first red test data signal, the first green test data signal, and/or the first blue test data signal may be supplied to the pixel portion **230**, embodiments of the invention may overcome the problems resulting from the pixel circuit not having a sufficient time to charge the data voltage. Moreover, in embodiments of the invention, because the test may be performed without passing through the data distributor **250**, it is unnecessary to synchronize the test control signal and test data signals with the red clock signal, the green clock signal, and the blue clock signal and thus, embodiments of the invention may overcome the problem with respect to signal synchronization.

[0106] As explained above, while the sheet unit test may be performed using the first test section **260**, the data distributor **250** may be set in an off state. In some embodiments of the invention, gate electrodes of the distribution transistors T_{11} to T_{m3} included in the data distributor **250** may be commonly connected to the seventeenth wire **287** included in the second wire group **280** through the pad portion **295**. While the sheet unit test may be performed by the first test section **260**, the distribution transistors T_{11} to T_{m3} may receive the bias signal V_{bias} from the seventeenth wire **287** and may maintain an off state. In some embodiments of the present invention, because the distribution transistors T_{11} to T_{m3} may be P-type, the bias signal V_{bias} can be set to a high level such that a gate high voltage signal V_{GH} may be supplied to the distribution transistors T_{11} to T_{m3} . However, the present invention is not limited thereto. That is, e.g., the bias signals V_{bias} can be set according to characteristics of the distribution transistors T_{11} to T_{m3} .

[0107] Moreover, while the sheet unit test may be performed, the second test section **240**, which may be connected between the data distributor **250** and the pad portion **295**, may also maintain an off state. Accordingly, gate electrodes of the transistors M_{11} to M_{1m} included in the

second test section **240** may be commonly connected to the seventeenth wire **287**. While the sheet unit test is performed, the transistors M_{11} to M_{1m} may receive the bias signal V_{bias} from the seventeenth wire **287** and may maintain an off state.

[0108] In some embodiments of the invention, as is evident from the above explanation, when the sheet unit test is performed using the first test section **260**, a test for a plurality of the organic light emitting display devices **210** may be carried out to increase the efficiency of the test. However, in this case, it may not be possible to determine whether all structural elements of the organic light emitting display devices **210** used in a real drive are inferior or not.

[0109] However, after the organic light emitting display devices **210** are scribed from the mother substrate **200**, the data distributor **250** may perform a function of supplying data signals from the data driver to the data lines D_1 to D_{3m} . Thus, after the organic light emitting display devices **210** are scribed and are being driven, the data distributor **250** may be used. Accordingly, in some cases employing one or more aspects of the invention, an array test for the data distributor **250** may always or substantially always be performed.

[0110] Such an array test for the data distributor **250** may be performed using, e.g., the second test section **240**. Thus, some embodiments of the invention may include the second test section **240** for separately testing the respective organic light emitting display devices **210** using the data distributor **250**.

[0111] External equipment, e.g., an array test equipment, may supply voltages of power supplies and signals through the pad portion **295** to perform a test for the respective organic light emitting display devices **210** using the second test section **240** and the data distributor **250**. An exemplary test for the respective organic light emitting display devices **210** using the second test section **240** and the data distributor **250** has been described above and thus, a repetitive description thereof is omitted.

[0112] In some cases, while the sheet unit test is performed using the first test section **260**, the second test section **240** and the data distributor **250** may be commonly connected to the seventeenth wire **287** and may maintain an off state. Where the second test section **240** and the data distributor **250** are directly connected to the seventeenth wire **287**, i.e., without a resistor and the like therebetween, the second test section **240** and the data distributor **250** may be erroneously operated during the separate test of the organic light emitting display devices **210** using array test equipment and the like and thus, as described below, the separate test may not progress satisfactorily.

[0113] In cases where the first to fifth pads **295_1** to **295_5** connected to the second test section **240** and the data distributor **250** are directly coupled to the seventeenth wire **287**, when the array test equipment supplies the second test control signal, the second test data signals, the red clock signal, the green clock signal, and/or the blue clock signal, the signals can flow to an undesirable path. Resistance may be present at a wire itself, of course. However, when the resistance is less than or equal to a predetermined value, the signals may flow to an abnormal path. For example, the red clock signal supplied to the third pad **295_3** may not be supplied to the first distribution transistors T_{11} to T_{m1} satisfactorily, but may flow to the second and/or distribution transistors T_{12} to T_{m2} and/or T_{13} to T_{m3} through the fourth pad **295_4** and/or the fifth pad **295_5**. Namely, when a separate test is performed with the organic light emitting

display devices **210** using the second test section **240** and the data distributor **250**, an electric current may flow to an abnormal path, thereby causing the test not to progress satisfactorily.

[0114] In order to prevent and/or reduce such defects in testing, at least one resistor R may be formed between the first to fifth pads **295_1** to **295_5** and the seventeenth wire **287**. A resistance of the resistor R may be set as a value sufficient to stably maintain the second test section **240** and the data distributor **250** in an off state by the bias signal V_{bias} supplied from the seventeenth wire **287**, and to prevent an electric current from flowing to an abnormal path when a test is performed using the second test section **240** and the data distributor **250**.

[0115] Various resistances of the resistor R can be set according to a specification of the array test equipment. More particularly, the resistance may be set equal to or greater than a value obtained by dividing a level difference between a highest voltage V_h and a lowest voltage V_l by a specification current I_s . In embodiments of the invention, the resistance may be set as a value equal to or greater than $(V_h - V_l) / I_s$. Here, the specification current I_s may correspond to a maximum current that the test equipment can stably operate. In this case, so as to stably perform the test, the specification current I_s of the red clock signal, the green clock signal, and the blue clock signal may be less than or equal to about 70% of that of the test equipment.

[0116] FIG. 4 illustrates a chart of simulation results of red, green, and blue clock signals according to resistance values for the resistors R shown in FIGS. 2 and 3.

[0117] For example, when a test equipment having a specification current I_s of 20 mA is used, as shown in FIG. 4, and values of a red clock signal CLA, a green clock signal CLB, a blue clock signal CLC, a second test control signal T_GATE, and a second test data signal T_DATA are set and simulated, a resistance causing a current flowing during an array test A/T to be less than or equal to about 70% of the specification current I_s may be equal to or greater than about 900 ohms. Accordingly, according to one or more aspects of the invention, under such circumstances, the resistance of the resistor R may be set to be equal to or greater than about 900 ohms.

[0118] Although this numerical value is to provide a detailed description of an exemplary embodiment of the present invention, the present invention is not limited thereto. That is, in the present invention, a resistance of the resistor R formed between the seventeenth wire **287** and first to fifth pads **295_1** to **295_5** can be set according to a construction of the test equipment or the organic light emitting display device **210**, and may have various resistance values. Further, in the aforementioned exemplary embodiment, a resistance of the resistor R may be set to cause a flowing current during an array test A/T to be less than or equal to about 70% of the specification current I_s . However, embodiments of the present invention are not limited thereto. That is, the resistance of the resistor R can be set as various values sufficient to stably maintain the second test section **240** and the data distributor **250** in an off state based on the bias signal V_{bias} supplied from the seventeenth wire **287**. Thus, the resistor of the resistor R may be set as various values sufficient to prevent an electric current from flowing to an abnormal path when a test is performed using the second test section **240** and the data distributor **250**.

[0119] In embodiments of the invention in which the seventeenth wire **287** may be included in the second wire group **280**, the seventeenth wire **287** may be supplied the bias signal V_{bias} when the sheet unit test is being performed. However, embodiments of the present invention are not limited thereto. For example, the seventeenth wire **287** can be included in the first wire group **270**.

[0120] In embodiments of the invention, the first and second test sections **260** and **240** may be set in an off state in order to avoid influencing an operation of the organic light emitting display devices **210** when the respective organic light emitting display device **210** has been scribed from the mother substrate **200**. To do this, after scribing, the first and second test sections **260** and **240** may receive an externally supplied bias signal through the pad portion **295**.

[0121] As is clear from the forgoing description, in embodiments of the present invention, voltages of power supplies and signals may be supplied through the first and second wire groups **270** and **280** during a sheet unit test, and the test data signal, e.g., the first test data signal, may be directly supplied to the pixel portion **230** from the first and/or second wire groups **270** and **280** through the first test section **260**, without passing through the data distributor **250**. This may cause a drive problem due to a signal delay that may occur during the test using the data distributor **250** to be solved.

[0122] In some embodiments of the invention, a second test section **240** may be formed and a separate test for the organic light emitting display device **210** may be performed using the second test section **240** and the data distributor **250**, so that an array test of the data distributor **250** can be performed. In such embodiments of the invention, a test can be performed on the mother substrate **200** that involves all structural elements including the data distributor **250** that may be used when the organic light emitting display devices **210** are being driven. Here, the respective resistor R may be formed between the seventeenth wire **287** and the first to fifth pads **295_1** to **295_5** to prevent and/or reduce signals for the test from flowing to an abnormal path.

[0123] In the exemplary embodiment of the present invention described above, pixels included in the pixel portion **230** include red, green, and blue sub-pixels (not shown), and the first test section **260** may receive the first red test data signal, the first green test data signal, and the first blue test data signal from the thirteenth to fifteenth wires **283** to **285**, and may supply the first red test data signal, the first green test data signal, and the first blue test data signal to the red, green, and blue sub-pixels. Embodiments of the present invention are not limited thereto. The number of the first test data signals can be variously set according to the number of sub-pixels constituting one pixel. Further, the same number of the wires supplying the first test data signal may be set as the number of the sub-pixels. In the same manner, the clock signals inputted to the data distributor **250** may be set to include a red clock signal, a green clock signal, and a blue clock signal. Embodiments of the present invention are not limited thereto. For example, various clock signals inputted to the data distributor **250** may be set according to the number and kind of the sub-pixels constituting one pixel.

[0124] FIG. 5 illustrates a circuit diagram of an exemplary embodiment of a pixel employable by the pixel portion shown in FIGS. 1 to 3.

[0125] For convenience, in FIG. 5, a single exemplary pixel is illustrated and the red, green, and blue sub-pixels are not discerned from one another.

[0126] Referring to FIG. 5, the pixel may include an organic light emitting diode OLED and a pixel circuit 410. The pixel circuit 410 may be connected to an n-th scan line Sn, an n-th light emitting control line EMn, an m-th data line Dm, the first source voltage ELVDD, the initializing voltage Vinit, and the organic light emitting diode OLED, so that the organic light emitting diode OLED may emit light.

[0127] An anode electrode of the organic light emitting diode OLED may be connected to the pixel circuit 410, and a cathode electrode thereof may be connected to the second voltage source ELVSS.

[0128] The pixel circuit 410 may include first to sixth transistors T1 to T6 and a storage capacitor Cst. In FIG. 5, although the first to sixth transistors T1 to T6 are shown as P-type transistors, embodiments of the present invention are not limited thereto.

[0129] A first electrode of the first transistor T1 may be connected to a second node N2, and a second electrode thereof may be connected to a third node N3. A gate electrode of the first transistor T1 may be connected to a first node N1. The first transistor T1 may supply a current corresponding to a voltage stored in the storage capacitor Cst to the third node N3.

[0130] A first electrode of the second transistor T2 may be connected to an m-th data line Dm, and a second electrode thereof may be connected to the third node N3. A gate electrode of the second transistor T2 may be connected to a n-th scan line Sn. The second transistor T2 may be turned on when the scan signal is supplied to the n-th scan line Sn and may supply a data signal supplied to the m-th data line Dm to the third node N3.

[0131] A first electrode of the third transistor T3 may be connected to the second node N2, and a second electrode thereof may be connected to the first node N1. A gate electrode of the third transistor T3 may be connected to the n-th scan line Sn. The third transistor T3 may be turned on when the scan signal is supplied to the n-th scan line Sn, and the first transistor T1 may be diode-connected.

[0132] A first electrode of the fourth transistor T4 may be connected to the initializing voltage Vinit, and a second electrode thereof may be connected to the first node N1. A gate electrode of the fourth transistor T4 may be connected to an n-1-th scan line Sn-1. The fourth transistor T4 may be turned on when a scan signal is supplied to the n-1-th scan line Sn-1, and may initialize the storage capacitor Cst and the gate terminal of the first transistor T1. The voltage value of the initializing voltage Vinit may be set to be lower than the voltage value of the data signal.

[0133] A first electrode of the fifth transistor T5 may be connected to the first source voltage ELVDD, and a second electrode thereof may be connected to the second node N2. A gate electrode of the fifth transistor T5 may be connected to an n-th light emitting control line EMn. The fifth transistor T5 may be turned on when the light emitting control signal is not supplied to the n-th light emitting control line EMn, i.e., when a voltage level of the light emitting control signal is set a low level, and may transfer the first source voltage ELVDD to the second node N2.

[0134] A first electrode of the sixth transistor T6 may be connected to the third node N3, and a second electrode thereof may be connected to the anode electrode of the

organic light emitting diode OLED. A gate electrode of the sixth transistor T6 may be connected to the n-th light emitting control line EMn. The sixth transistor T6 may be turned on when the light emitting control signal is not supplied to the n-th light emitting control line EMn, and may electrically connect the third node N3 to the organic light emitting diode OLED.

[0135] One terminal of the storage capacitor Cst may be connected to the first source voltage ELVDD and the first electrode of the fifth transistor T5, and another terminal thereof may be connected to the first node N1. The storage capacitor Cst may charge a voltage corresponding to a data signal and a threshold voltage Vth of the first transistor T1 when the scan signal is supplied to the n-th scan line Sn, and may maintain the charged voltage for one frame.

[0136] FIG. 6 illustrates a waveform diagram of signals that may be supplied to control the pixel circuit shown in FIG. 5.

[0137] The exemplary operation of the pixel shown in FIG. 3 will be described in detail in connection with FIGS. 5 and 6.

[0138] Referring to FIG. 6, a scan signal Sn-1 may be supplied to the n-1-th scan line Sn-1 for a time period of t1, and a light emitting control signal EM1 may be supplied to the n-th light emitting control line EMn. If a light emitting control signal EM1 is supplied to the n-th light emitting control line EMn, the fifth and sixth transistors T5 and T6 may be turned off. Further, the scan signal Sn-1 may be supplied to the n-1 scan line Sn-1, and may turn on the fourth transistor T4. If the fourth transistor T4 is turned on, the storage capacitor Cst and the gate terminal of the first transistor T1 may be connected to the initializing voltage Vinit. If the storage capacitor Cst and the gate terminal of the first transistor T1 are connected to the initializing source Vinit, the initializing voltage Vinit may be supplied to the storage capacitor Cst and the gate terminal of the first transistor T1 for initialization.

[0139] Thereafter, a scan signal SS may be supplied to the n-th scan line Sn for a time period of t2. If the scan signal SS is supplied to the n-th scan line Sn, the second and third transistors T2 and T3 may be turned on. If the third transistor T3 is turned on, the first transistor T1 may be diode-connected. When the second transistor T2 is turned on, the data signal supplied to the m-th data line Dm may be transferred to the third node N3. Then, since the gate terminal of the first transistor T1 may be initialized, by the initializing voltage Vinit, to a voltage value lower than the data signal, the voltage supplied to the third node N3 may pass through the first and third transistors T1 and T3, and may be supplied to the first node N1. Then, the threshold voltage Vth of the first transistor T1 and the voltage corresponding to the data signal may be stored in the storage capacitor Cst.

[0140] Thereafter, if the light emitting control signal EM1 is not supplied to the n-th light emitting control line EMn, the fifth and sixth transistors T5 and T6 may be turned on. If the fifth and sixth transistors T5 and T6 are turned on, a current corresponding to the data signal may flow from the first source voltage ELVDD to the organic light emitting diode OLED and a light corresponding to the data signal may be generated in the organic light emitting diode OLED.

[0141] As is clear from the forgoing description, in the organic light emitting display device and the mother substrate according to one or more aspects of the present

invention, the first and second wire groups may be included to perform a sheet unit test for a plurality of organic light emitting display devices on the mother substrate in a state where each of the organic light emitting display devices are not scribed. Thus, embodiments of the invention enable efficiency of the test to be improved.

[0142] Embodiments of the invention separately enable a sheet unit test to be performed by directly supplying test data signals to a pixel portion through a first test section, without having the test signal pass through a data distributor. Thus, embodiments of the invention enable a problem due to a drive signal delay occurring when a test using a data distributor is performed on the mother substrate.

[0143] Embodiments of the invention separately enable a second test section to be separately formed and a separate test for an organic light emitting display device to be performed using the second test section and a data distributor. Accordingly, embodiments of the invention enable tests to be performed with respect to all structural elements used when the organic light emitting displays are driven on the mother substrate. In some embodiments of the invention, resistors may be formed between a corresponding wire, e.g., the seventeenth wire, and pads, e.g., first to fifth pads, so that the test thereof can be normally and/or substantially normally performed.

[0144] Exemplary embodiments of the present invention have been disclosed herein, and although specific terms are employed, they are used and are to be interpreted in a generic and descriptive sense only and not for purpose of limitation. Accordingly, it will be understood by those of ordinary skill in the art that various changes in form and details may be made without departing from the spirit and scope of the present invention as set forth in the following claims.

What is claimed is:

1. An organic light emitting display device, comprising:
 - a pixel portion including a plurality of pixels, which are coupled to scan lines and data lines;
 - a scan driver adapted to provide scan signals to the scan lines;
 - a first transistor group adapted to test the plurality of pixels, the first transistor group being directly connected to first ends of the data lines;
 - a second transistor group adapted to test the plurality of pixels, the second transistor group being connected to second ends of the data lines;
 - a data distributor coupled between the second ends of the data lines and the second transistor group;
 - a first wire group extending in a first direction at an outer area of the light emitting display device; and
 - a second wire group extending in a second direction at the outer area of the light emitting display device.
2. The organic light emitting display device as claimed in claim 1, wherein the data lines are directly connected to the pixel portion such that the data lines directly connect the first transistor group to the pixel portion.
3. The organic light emitting display device as claimed in claim 1, wherein the first transistor group includes a plurality of transistors, each of the plurality of transistors of the first transistor group being connected to one of the data lines, a gate electrode of the transistors being commonly connected to a pad of a pad portion of the light emitting display, and each of the transistors maintaining an off state according to an externally supplied bias signal.

4. The organic light emitting display device as claimed in claim 1, wherein the plurality of transistors of the first transistor group include a first color transistor group, a second color transistor group and a third color transistor group that are connected to a first, second and third pad of a pad portion of the light emitting display.

5. The organic light emitting display device as claimed in claim 1, further comprising:

- at least two resistors including one terminal electrically coupled to a predetermined wire included in the first or second wire group and another terminal that is in an electrically open state.

6. The organic light emitting display device as claimed in claim 5, wherein the second transistor group includes a plurality of transistors, which are coupled between a pad included in a pad portion and the data distributor.

7. The organic light emitting display device as claimed in claim 6, wherein gate electrodes of the transistors of the second transistor group are commonly coupled to a second pad included in the pad portion, and the transistors simultaneously turn-on based on a second test control signal supplied from the second pad and supply the second test data signal to the data distributor.

8. The organic light emitting display device as claimed in claim 6, wherein the plurality of transistors of the second transistor group include a first color transistor group, a second color transistor group and a third color transistor group that are connected to a third, fourth and fifth pad of a pad portion of the light emitting display.

9. The organic light emitting display device as claimed in claim 6, wherein the pad portion is further away from the pixel portion than the data distributor.

10. The organic light emitting display device as claimed in claim 5, wherein the first transistor group is arranged on a first side of the pixel portion, and the second transistor group and the data distributor are arranged on a second side of the pixel portion, the first side being opposite to the second side.

11. The organic light emitting display device as claimed in claim 5, wherein the plurality of transistors in the second transistor group maintain an off state based on an externally supplied bias signal.

12. The organic light emitting display device as claimed in claim 1, wherein an end of the first wire group and an end of the second wire group are in an electrically open state.

13. The organic light emitting display device as claimed in claim 1, wherein at least one of the first wire group and the second wire group are electrically disconnected from the pixel portion.

14. The organic light emitting display device as claimed in claim 1, wherein the first wire group and the second wire group are electrically disconnected from the pixel portion.

15. A mother substrate including a plurality of organic light emitting display devices, comprising:

- a first wire group extending in a first direction at outer areas of the organic light emitting display devices; and
- a second wire group extending in a second direction at the outer areas of the organic light emitting display devices,

wherein each of the organic light emitting display devices includes:

- a pixel portion including a plurality of pixels, which are coupled to scan lines and data lines;

- a scan driver adapted to provide scan signals to the scan lines;
- a first test section coupled to first ends of the data lines;
- a second test section coupled to second ends of the data lines;
- a data distributor coupled between the second ends of the data lines and the second test section; and
- at least two resistors between a predetermined wire included in the first or second wire group and the second test section, and between the predetermined wire and the data distributor.
- 16.** The mother substrate as claimed in claim **15**, wherein each of the organic light emitting display devices further includes a pad portion including a plurality of pads for receiving externally supplied power supply voltages and signals.
- 17.** The mother substrate as claimed in claim **16**, wherein the resistors are disposed between the pad portion and the predetermined wire included in the first or second wire group.
- 18.** The mother substrate as claimed in claim **17**, wherein the second test section includes a plurality of transistors having a first terminal thereof coupled to the data distributor, a second terminal thereof coupled to a first pad of the plurality of pads, and a gate terminal commonly coupled to a second pad of the plurality of pads, wherein one of the resistors is arranged between the first pad and a predetermined wire including in the first or second wire group, and another of the resistors is arranged between the second pad and the predetermined wire group.
- 19.** The mother substrate as claimed in claim **15**, wherein the resistors are disposed outside of a scribe line of the organic light emitting display device in which the second test section and the data distributor connected to the resistor are arranged.
- 20.** The mother substrate as claimed in claim **15**, wherein the data distributor includes:
- first distribution transistors coupled between one of transistors included in the second test section and data lines of a first sub-pixel of the pixel portion;
 - second distribution transistors coupled between one of the transistors included in the second test section and data lines of a second sub-pixel of the pixel portion; and
 - third distribution transistors coupled between one of the transistors included in the second test section and data lines of a third sub-pixel of the pixel portion.
- 21.** The mother substrate as claimed in claim **20**, wherein:
- one of the resistors is disposed between a third pad to which gate electrodes of the first distribution transistors are coupled in common and a predetermined wire included in the first or second wire group;
 - a second one of the resistors is disposed between a fourth pad to which gate electrodes of the second distribution transistors are coupled in common and the predetermined wire; and
 - a third one of the resistors is disposed between a fifth pad to which gate electrodes of the third distribution transistors are coupled in common and the predetermined wire, respectively.
- 22.** The mother substrate as claimed in claim **15**, wherein each of the first and second test sections includes a plurality of transistors coupled to the data lines, the transistors included in the first test section being turned on during a first period of time and the transistors included in the second test section being turned on during a second period of time, the first period of time being different from the second period of time.
- 23.** The mother substrate as claimed in claim **22**, wherein: the transistors included in the first test section are simultaneously turned-on according to a first test control signal supplied from the first or second wire group and supply a first test data signal from the first or second wire group to the data lines, and the transistors included in the second test section maintain an off state according to a bias signal supplied from the first or second wire group through the resistor.
- 24.** The mother substrate as claimed in claim **23**, wherein: the data distributor includes a plurality of transistors between the transistors included in the second test section and the data lines, and the transistors included in the data distributors maintain an off state according to a bias signal supplied from the first or second wire group through the resistor.
- 25.** The mother substrate as claimed in claim **22**, wherein: the transistors included in the first test section maintain an off state according to a predetermined control signal supplied from the first or second wire group, and the transistors included in the second test section are simultaneously turned-on according to a second test control signal supplied from an exterior through a pad portion.
- 26.** The mother substrate as claimed in claim **25**, wherein the data distributor supplies a second test data signal from the second test section to at least one of first sub pixels, second sub pixels, and third sub pixels.
- 26.** The mother substrate as claimed in claim **15**, wherein: the first wire group is connected to respective ones of the organic light emitting display devices, which are commonly disposed in a same column, and the second wire group is connected to respective ones of the organic light emitting display devices, which are commonly disposed in a same row.
- 28.** The mother substrate as claimed in claim **15**, wherein the first test section includes a plurality of transistors, which are coupled between one of the wires included in the first or second wire group and one of the data lines.
- 29.** The mother substrate as claimed in claim **28**, wherein the transistors included in the first test section are simultaneously turned-on according to a first test control signal supplied from a predetermined wire of the first or second wire group, and supply a first test data signal to the data line.

* * * * *

专利名称(译)	有机发光显示装置及其母基板		
公开(公告)号	US20080054798A1	公开(公告)日	2008-03-06
申请号	US11/882051	申请日	2007-07-30
[标]申请(专利权)人(译)	JEONG JIN TAE KWAK WON KYU		
申请(专利权)人(译)	JEONG JIN-TAE KWAK WON-KYU		
当前申请(专利权)人(译)	JEONG JIN-TAE KWAK WON-KYU		
[标]发明人	JEONG JIN TAE KWAK WON KYU		
发明人	JEONG, JIN-TAE KWAK, WON-KYU		
IPC分类号	H01L51/54 G01R31/00 H01J1/62		
CPC分类号	G09G3/006 G09G3/3225 G09G3/3233 G09G3/3291 G09G2300/0408 G09G2300/0426 H01L27/3276 G09G2300/0819 G09G2300/0842 G09G2300/0861 G09G2310/0262 G09G2310/0297 G09G2300/0809		
优先权	1020060083148 2006-08-30 KR		
其他公开文献	US7995011		
外部链接	Espacenet USPTO		

摘要(译)

有机发光显示装置可包括：像素部分，包括多个像素，其耦合到扫描线和数据线；扫描驱动器，适于向扫描线提供扫描信号；第一晶体管组，适于测试多个扫描线和数据线像素，第一晶体管组直接连接到数据线的第一端，第二晶体管组适于测试多个像素，第二晶体管组连接到数据线的第二端，数据分配器连接到第二晶体管数据线和第二晶体管组的端部，在发光显示装置的外部区域沿第一方向延伸的第一线组，以及在发光显示器的外部区域沿第二方向延伸的第二线组设备。

